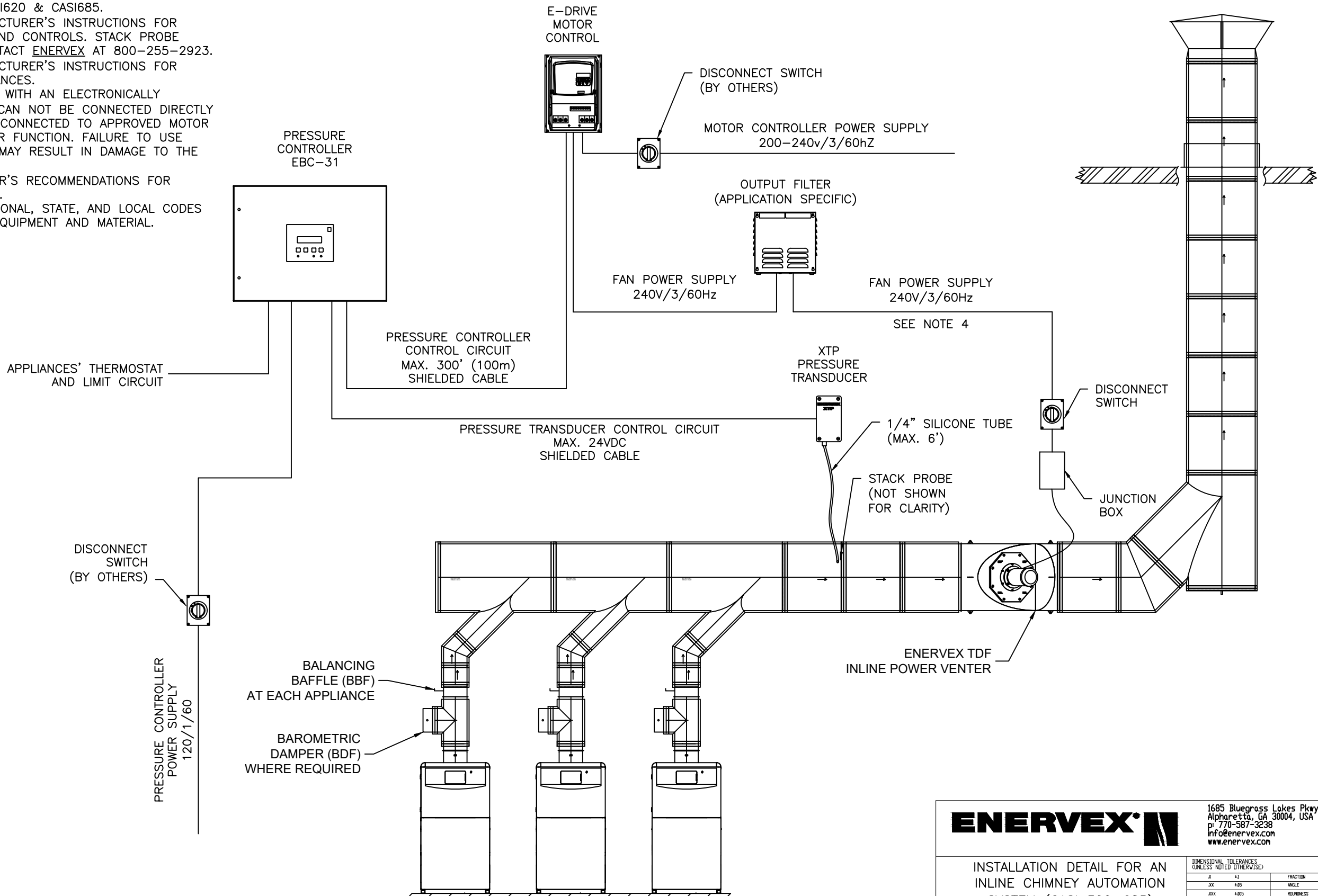


DRAWING NOTES

- 1. WIRING INFORMATION IS SUITABLE FOR ENERVEX CASI300, CASI400, CASI500, CASI560, CASI620 & CASI685.
- 2. FOLLOW EQUIPMENT MANUFACTURER’S INSTRUCTIONS FOR PROPER INSTALLATION OF FAN AND CONTROLS. STACK PROBE LOCATION IS JOB SPECIFIC; CONTACT ENERVEX AT 800-255-2923.
- 3. FOLLOW EQUIPMENT MANUFACTURER’S INSTRUCTIONS FOR PROPER INSTALLATION OF APPLIANCES.
- 4. THIS PRODUCT IS EQUIPPED WITH AN ELECTRONICALLY COMMUTATED (EC-MOTOR) AND CAN NOT BE CONNECTED DIRECTLY TO AC MAINS. MOTOR MUST BE CONNECTED TO APPROVED MOTOR CONTROLLER TO ENSURE PROPER FUNCTION. FAILURE TO USE APPROVED MOTOR CONTROLLER MAY RESULT IN DAMAGE TO THE MOTOR.
- 5. FOLLOW VENT MANUFACTURER’S RECOMMENDATIONS FOR CORRECT INSTALLATION METHODS.
- 6. FOLLOW ALL PERTINENT NATIONAL, STATE, AND LOCAL CODES FOR PROPER INSTALLATION OF EQUIPMENT AND MATERIAL.



NOTICE: THIS DRAWING CONTAINS PROPRIETARY INFORMATION AND IT SHALL NOT BE USED, REPRODUCED OR ITS CONTENTS DISCLOSED, IN WHOLE OR IN PART, WITHOUT THE EXPRESS WRITTEN CONSENT OF ENERVEX, INCORPORATED.

ENERVEX

1685 Bluegrass Lakes Pkwy
Alpharetta, GA 30004, USA
p. 770-587-3238
info@enervex.com
www.enervex.com

INSTALLATION DETAIL FOR AN
INLINE CHIMNEY AUTOMATION
SYSTEM (CASI 300-685)
240v EBC-31

DIMENSIONAL TOLERANCES (UNLESS NOTED OTHERWISE)			
X	±1	FRACTION	1/16"
XX	±.05	ANGLE	12°
XXX	±.03	ROUNDNESS	.03
SIZE	DRAWING NUMBER		REV
B			A

DATE: 10/11/2016